



# MORE 55

close to perfection



**Schwern-Yachten**

**Jürgen Schwern (+49 171 4217434) & Frank Kuhlmann (+49 171 4170120)**  
**[www.schwern-yachten.de](http://www.schwern-yachten.de)**

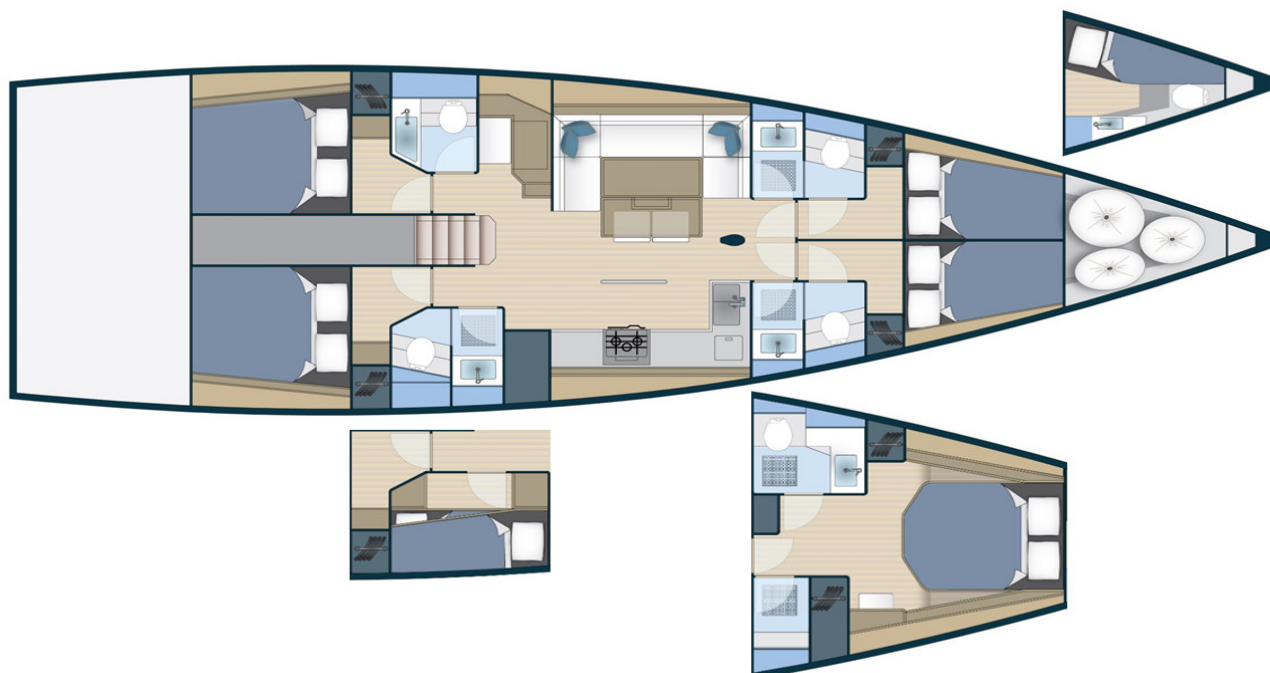
SHIPYARD **A-More Yachts Ltd | Bana Josipa Jelačića 25B | 21204 Dugopolje | Croatia**  
 DESIGNER **Cossutti Yacht Design**  
 INTERIOR **Blue Emotion Yacht Engineering / Cossutti Yacht Design**  
 ENGINEERING **Blue Emotion Yacht Engineering**  
**A-More Boats Ltd. Engineering Team**  
 CE CERTIFICATION **DNV - Germanischer Lloyd (A Ocean)**

MEASUREMENTS

|                            |                      |
|----------------------------|----------------------|
| <b>LENGHT OVERALL</b>      | 16,70 m              |
| <b>LENGHT OF WATERLINE</b> | 15,54 m              |
| <b>HULL LENGHT</b>         | 16,00 m              |
| <b>BEAM</b>                | 5,00 m               |
| <b>DRAFT (std)</b>         | 2,70 m               |
| <b>DISPLACEMENT</b>        | 15.300 kg            |
| <b>BALLAST</b>             | 5.300 kg             |
| <b>BERTHS (max)</b>        | 13 (10+2+1)          |
| <b>CABINS</b>              | 3/4/5 (+1 optional)  |
| <b>HEADS (std)</b>         | 3                    |
| <b>ENGINE (STD)</b>        | Yanmar 80 hp SD      |
| <b>FUEL (2 tanks)</b>      | 550 l                |
| <b>WATER (2 tanks)</b>     | 750 l                |
| <b>MAIN SAIL</b>           | 88,90 m <sup>2</sup> |
| <b>GENOA (105%)</b>        | 80,15 m <sup>2</sup> |
| <b>GENNAKER</b>            | 220 m <sup>2</sup>   |

**CONSTRUCTION** **Hull & Deck**  
 Vacuum infused epoxy based vinylester cored GRP  
 White (isophtalic) gelcoat with decorative bands  
 Optimal strength/weight ratio - achieved by using multiaxial and unidirectional E-glass fibers  
 Transparent gel coat under waterline for visual quality control  
 Thermal and sound insulated hull and deck  
 Stainless steel frame bellow saloon floor as reinforcement in way of keel, taking loads from keel stepped mast to  
 Stress areas (where winches / major deck fittings are fixed) reinforced with alu or okoume plywood  
 Hull and deck are bonded with structural glue and additionally laminated

**Layout** **(with options)**



|                            |   |
|----------------------------|---|
| <b>DECK EQUIPMENT</b>      | <p>Teak on cockpit seats<br/>                 Stainless steel bow fitting (with anchor/chain roller) and attachment for asymmetrical spinnaker<br/>                 Stainless steel chainplates<br/>                 Self-draining anchor/chain locker<br/>                 12 stainless steel stanchion bases<br/>                 Rail gates on both sides<br/>                 2 openable portlights in cockpit<br/>                 12 portlights on hull<br/>                 2 openable portlights on side coachroof<br/>                 6 size 41 flush hatches<br/>                 1 size 70 flush hatches<br/>                 3 size 60 flush hatches</p>   |
| <b>Cockpit</b>             | <p>Storage locker in mid cockpit<br/>                 Dry stowage lockers on ps &amp; sb side<br/>                 Outboard drained two gas bottles (ps) compartment<br/>                 Foldable helmsman footstops<br/>                 Rudder stock head for installing the emergency tiller<br/>                 Two steering pedestals<br/>                 Single lever engine control inside recess on cockpit side<br/>                 Swimming platform with swimming ladder manually operated<br/>                 Dingy 2,8m storage bellow cockpit</p>  |
| <b>RIGGING</b>             | <p><b>Mast</b><br/>                 Performance silver anodized aluminum mast fractional Selden<br/>                 Triple swept back (approx. 20°) spreaders in aluminum, dyform rigging, polyester sheets, main sail and jib halyard in vectran<br/>                 The mast step bolted to the stainless steel keel frame<br/>                 The standard mast includes: main halyard, spi halyard, jib halyard, boom topping lift</p> <p><b>Boom</b><br/>                 Silver anodized aluminum boom<br/>                 Two (internal) reef lines for single line reefing system; one clew outhaul device<br/>                 The gas pressured boom vang with an outer purchase block system</p> <p><b>Standing rigging</b><br/>                 Discontinuous stainless steel dyform rigging includes:<br/>                 Thru deck Jib Furler<br/>                 Hydraulic backstay adjuster/tensioner</p> <p><b>Running rigging</b><br/>                 All halyards, reef lines, tensioners and control lines are hidden bellow deck and led to the cockpit (winches)</p> |
| <b>Sheets &amp; ropes:</b> | <p>main sheet, jib sheet, two reefing lines, outhaul<br/>                 Full width main sheet traveler hidden bellow cockpit sole with possibility of easy transforming into mid boom sheeting system with possibility of big bimini covering whole cockpit</p>   |
| <b>Stoppers (Clutches)</b> | <p>10 x Spinlock, 2 X 5 sheave deck organizers</p>  |
| <b>Winches</b>             | <p>2 Lewmar primaries/genoa sheet 2-speed winches, size 65<br/>                 2 Lewmar secondary 2-speed winches size 55<br/>                 2 Lewmar mainsheet 2-speed winches size 55<br/>                 3 winch handles with PVC handle holders</p>   |
| <b>SHIP EQUIPMENT</b>      | <p><b>Steering system</b><br/>                 Single rudder system<br/>                 Semi-balanced rudder with self aligning roller bearings<br/>                 Double Steering wheel black GFC 1000mm<br/>                 Emergency tiller in stainless steel</p>   |
| <b>Keel</b>                | <p>Cast iron fin with lead bulb, draft 2,7m<br/>                 Magnetic compass</p>   |

|  |  |
|--|--|
| <b>Lights</b>                            | Navigation lights LED (bow port, bow stbd, stern), running light, anchor light, deck light, all LED  |
| <b>Anchoring &amp; Mooring Equipment</b> | Stainless steel anchor arm, 25Kg Anchor (galvanized), 50m x 10mm Anchor Chain (galvanized), Electric Anchor Windlass, 6 x mooring cleats   |
| <b>INTERIOR</b>                          | <p><b>Furniture, Inventory</b><br/>                 Standard interior layout (A): 4 cabins and 4 Head units<br/>                 Large saloon with I shaped kitchen forefront<br/>                 Interior Joinery: marine grade water proof core, faced with selected Alpi marine Oak veneer<br/>                 All Bulkheads in okoume plywood<br/>                 Fore peak space as sail locker<br/>                 Cushions are made in high quality foam with selected upholstery<br/>                 Floorboards are Alucore- honeycomb 15 mm thick aluminum faced with HPL in wood colour</p> <p><b>FORWARD CABIN(S)</b><br/>                 Forward cabins easy convertible in one big cabin by removing segmental bulkhead<br/>                 Lockers under Berth<br/>                 Wardrobes (port &amp; stbd side) with Shelves and Hangers<br/>                 Hanging lockers, shoe lockers</p> <p><b>FORWARD HEAD UNIT(S)</b><br/>                 GRP Wash Basins, Corian wash basin Boards, Separate shower area<br/>                 Hot&amp;cold fresh water mixing taps also with shower unit<br/>                 Shower automatically drained by electric pump<br/>                 Manual marine Toilet<br/>                 Front opening double Locker - placed above wash basin - with mirrors mounted on fronts<br/>                 Waste holding tank (app. 55 l) fitted with external non contact sensors and tank level Watch, deck Outlet<br/>                 Teak shower Grating</p> <p><b>AFT CABIN (STBD &amp; PORT)</b><br/>                 Double Berth with Shelve and Lockers above bed along Hull side<br/>                 Large hanging Locker and Shelve above<br/>                 Lockers under Berth</p> <p><b>AFT HEAD UNITS</b><br/>                 GRP Wash Basin, Corian wash basin Board, Hot&amp;cold fresh water mixing taps<br/>                 Shower automatically directly drained by electric pump<br/>                 Manual marine Toilet<br/>                 Front opening double Locker (with Mirrored doors) placed above toilet/shower seat<br/>                 Waste holding tank (app. 65 l) fitted with external non contact sensors and tank level Watch, deck Outlet</p> <p><b>SALOON</b><br/>                 Large U-shaped settee to Hull ps side with dining table<br/>                 Upper Cabinet sections with doors along Hull sides<br/>                 Storage Lockers under seats and behind backrests</p> <p><b>GALLEY</b><br/>                 Galley with Corian work top, Twin stainless steel rectangular sinks<br/>                 Mixing tap for pressurized hot&amp;cold fresh water<br/>                 Gas stove (on gimbals) with an oven and three burners<br/>                 Two refrigerators<br/>                 Storage Lockers - with shelves and doors - above work top along Hull side<br/>                 Storage - with shelve and door - below sinks; Waste Basket mounted on Storage door</p> <p><b>COMPANIONWAY</b><br/>                 Gas sprung openable stairs as Engine Compartment cover</p> <p><b>ENGINE COMPARTMENT</b><br/>                 Sound and thermal insulated with non flammable foam material<br/>                 Easy accessible through opening the Companionway stairs and/or removing the side hatches (provided in both aft cabins)<br/>                 Provided with Automatic Fire Extinguisher<br/>                 Space for generator inside engine compartment</p> <p><b>SANITARY SYSTEMS; DISCHARGE SYSTEMS</b><br/>                 Hot&amp;cold pressurized fresh water system<br/>                 Ventilated fresh water tanks placed bellow berth in the forward cabin for a total capacity of app. 750l with inspection holes/covers<br/>                 Tank level gauge(s) (placed on electric switchboard)</p> |

**MACHINERY**

Mixing fresh water taps are fitted in both Head units and in the Galley  
Shower with hot&cold fresh water can be fitted in Cockpit  
Hot water tank capacity of 30 l heated by integrated heater run with 220V shore power or by engine cooling (fresh) water  
Shower basins are drained direct into the sea by electric shower pumps  
Electric shower pumps are operated by automatic switch  
Shower in cockpit (hot and cold water)

**MAIN COMPONENTS**

Yanmar engine 80HP with sail drive SD 60  
Gear/Gas level control is placed in Cockpit  
Alternator 80A  
3 blade fixed propeller

**SYSTEMS FOR MACHINERY MAIN COMPONENTS**

2 Fuel oil tanks in stainless steel for a total capacity of app. 470 l  
Tank inspection hole/cover with incorporated fuel float  
Tank level gauge (placed on electric switchboard)  
Fuel oil Filter with water Separator

**SHIP SYSTEMS**

**Bilge systems**

Electric bilge pump, operated by automatic and/or manual switch  
Electric bilge pump for aft bilge operated by automatic and/or manual switch  
Hand operated bilge pump is positioned in the Cockpit

**Electrical systems**

**24/12 V DC SYSTEM**

LED lights in whole interior  
Main Switchboard includes LED indicators and thermomagnetic switches  
12 V sockets  
Battery Charger  
1 x 12V 100 Ah engine start Battery  
600 Ah service Batteries Bunk  
Battery Switch  
Safety battery protector Anode  
Emergency start crossover system

**230 V AC POWER SUPPLY**

230 V AC Distribution board  
Main Circuit Breaker  
230 V AC sockets  
Shore Power dock side Cable

| MORE 55 PRICE LIST 2020 - 2021      |   | Price        |              |
|-------------------------------------|---|--------------|--------------|
| Code                                | Price list validity: March, 2020. This price list automatically cancels all previously distributed. (E.&O.E.)   | net.         | inkl. 19%    |
| <b>BOAT</b>                         |   |              |              |
| MB001                               | MORE 55 WITH STANDARD SPECIFICATION / YANMAR 4JH80, 80 HP with sail drive SD60  | € 495.000,00 | € 589.050,00 |
| MB002                               | Extra for YANMAR 4J4-HTE, 110 HP with KMH4A direct drive  | € 4.900,00   | € 5.831,00   |
| <b>KEEL</b>                         |   |              |              |
| MK001                               | KEEL T-SHAPE, CAST IRON FIN, LEAD BULB, DRAFT 2,4m  | € 5.000,00   | € 5.950,00   |
| MK002                               | PERFORMANCE KEEL T-SHAPE, CAST IRON FIN, LEAD BULB, DRAFT 2,7m  | STANDARD     | STANDARD     |
| <b>HULL</b>                         |   |              |              |
| MH001                               | VACUUM INFUSED EPOXY BASED VINYLESTER HULL, WHITE ISOPHTHALIC GELCOAT   | STANDARD     | STANDARD     |
| MH002                               | COLOURED GELCOAT HULL IN LIGHT GREY COLOR   | € 5.200,00   | € 6.188,00   |
| MH003                               | PAINTED HULL (DOUBLE COAT)  | € 15.000,00  | € 17.850,00  |
| <b>INTERIOR LAYOUT</b>              |   |              |              |
| ML001                               | <b>3 CABINS / 3 HEADS + 1 SHOWER VERSION</b> (1 fwd owner's cabin with ensuite toilette on port side & shower on stb side/2 aft cabins with 2 toilettes/sail locker FWD)  | € 7.200,00   | € 8.568,00   |
| ML002                               | <b>4 CABINS / 4 HEADS VERSION</b><br>(2 forward cabins easily convertable into one / 2 aft cabins / sail locker FWD)  | STANDARD     | STANDARD     |
| ML003                               | <b>5 CABINS / 3 HEADS VERSION</b><br>(2 forward cabins easily convertable into one / 2 aft cabins /1 bunk bed cabin / sail locker FWD)  | € 4.900,00   | € 5.831,00   |
| ML004                               | <b>SKIPPER CABIN IN SAIL LOCKER</b>   | € 3.500,00   | € 4.165,00   |
| <b>PACKAGES</b>                     |   |              |              |
| MP001                               | Package "ELEGANCE" - Includes:<br>- Bow thruster in tunnel<br>- Additional 12V fridge<br>- FUSION radio MP3 / USB player / FUSION cube speaker system in saloon with amplifier / FUSION waterproof cockpit speakers<br>- AGM battery upgrade<br>- 2 removable cockpit tables in solid teak wood connectable in one big table<br>- Hydraulic bathing platform in teak<br>- Ocean air blinds for all windows and hatches  | € 13.700,00  | € 16.303,00  |
| MP002                               | Package "PERFORMANCE" - Includes:<br>- Retractable Side Power bow thruster<br>- Additional 12V fridge<br>- FUSION radio MP3/ USB player / FUSION cube speaker system in saloon with amplifier / FUSION waterproof cockpit speakers<br>- AGM battery upgrade<br>- 2 removable cockpit tables in solid teak wood connectable in one big table<br>- Hydraulic bathing platform in teak<br>- Performance deck hardware (includes upgraded Lewmar EVO RACE winches)<br>- Lewmar electric haylard winch<br>- Dyneema haylards<br>- Gennaker equipment<br>- Ocean air blinds for all windows and hatches | € 23.000,00  | € 27.370,00  |
| <b>UPHOLSTERY / PRESVLAKE</b>       |   |              |              |
| MU001                               | MATTRASSES & SALOON COUSHINS, Upholstery "Verona"   | STANDARD     | STANDARD     |
| MU002                               | MATTRASSES & SALOON COUSHINS, Upholstery "Aqua Clean"   | € 800,00     | € 952,00     |
| MU003                               | LEATHER UPHOLSTERY IN SALOON  | € 5.400,00   | € 6.426,00   |
| MU004                               | ECO LEATHER UPHOLSTERY IN SALOON  | € 1.500,00   | € 1.785,00   |
| <b>FURNITURE FINISH / NAMJEŠTAJ</b> |   |              |              |
| MF001                               | FURNITURE VENEERED IN ALPI VENEER - OAK   | STANDARD     | STANDARD     |
| MF002                               | FURNITURE VENEERED IN ALPI VENEER - TEAK  | € 7.000,00   | € 8.330,00   |
| MF003                               | FURNITURE VENEERED IN NATURAL VENEER - TEAK   | € 15.000,00  | € 17.850,00  |
| <b>ELECTRONICS</b>                  |   |              |              |
| MEL001                              | <b>ELECTRONIC PACK 2020</b> - Includes:<br>- B&G Triton display T41 incl. speed, depth, temp transd. (1 set)<br>- B&G Triton display T41 including wind transducer (1 set)<br>- VHF RADIO B&G   | € 2.900,00   | € 3.451,00   |
| MEL002                              | <b>B&amp;G TRITON DISPLAY T41 INCL. SPEED,DEPTH, TEMP TRANSDUCER (1 SET)-IN COCKPIT</b>   | € 1.150,00   | € 1.368,50   |
| MEL003                              | <b>B&amp;G TRITON DISPLAY T41 INCLUDING WIND TRANSDUCER (1 SET)-IN COCKPIT</b>  | € 1.550,00   | € 1.844,50   |

| MORE 55 PRICE LIST 2020 - 2021                  |   | Price       |             |
|---|---|-------------|-------------|
| Code  | Price list validity: March, 2020. This price list automatically cancels all previously distributed. (E.&O.E.) | net.        | inkl. 19%   |
| MEL004  | B&G ZEUS TOUCH T-7 CHART PLOTTER ON HELM STATION  | € 1.550,00  | € 1.844,50  |
| MEL005  | B&G ZEUS TOUCH T-12 CHART PLOTTER ON CHART TABLE  | € 4.500,00  | € 5.355,00  |
| MEL006  | B&G BROADBAND RADAR 3G (ONLY WITH MN1003)   | € 4.200,00  | € 4.998,00  |
| MEL007  | NAIS-500 NAVICO CLASS B   | € 1.250,00  | € 1.487,50  |
| MEL008  | VHF RADIO B&G V50   | € 650,00    | € 773,50    |
| MEL009  | H50 WIRELESS HEADPHONE FOR VHF RADIO V50 B&G  | € 260,00    | € 309,40    |
| MEL010  | AUTOPILOT WITH L&S HYDRAULIC LINEAR DRIVE   | € 6.200,00  | € 7.378,00  |
| MEL011  | REMOTE WINDLASS CONTROL WITH CHAIN COUNTER  | € 450,00    | € 535,50    |
| MEL012  | AUTOPILOT REMOTE CONTROL  | € 700,00    | € 833,00    |
| MEL013  | EPIRB   | € 1.000,00  | € 1.190,00  |
| MEL014  | ENTEL GMDSS HANDHELD VHF STATION  | € 720,00    | € 856,80    |
| MEL015  | SATELLITE PHONE SAILOR (THRANE&THRANE) 150 FLEET BROADBAND  | € 8.200,00  | € 9.758,00  |
| MEL016  | SATELLITE PHONE SAILOR (THRANE&THRANE) 250 FLEET BROADBAND  | € 15.000,00 | € 17.850,00 |
| MEL017  | SAILOR THRANE&THRANE INMARSAT MINI C 6150   | € 3.500,00  | € 4.165,00  |
| MEL018  | SART  | € 850,00    | € 1.011,50  |
| <b>DECK EQUIPMENT / SAILS &amp; RIG</b>         |   |             |             |
| MD001   | SELDEN PERFORMANCE ALUMINIUM MAST, 3 SPREADERS DYFORM RIGGING   | STANDARD    | STANDARD    |
| MD002   | JOHN MAST PERFORMANCE ALUMINIUM MAST, 3 SPREADERS, ROD RIGGING  | € 15.000,00 | € 17.850,00 |
| MD003   | ELECTRIC JIB FURLER   | € 9.500,00  | € 11.305,00 |
| MD004   | GENOA HI MODULUS DACRON CROSS CUT "One Sails"   | € 7.000,00  | € 8.330,00  |
| MD005   | MAIN SAIL HI MODULUS DACRON TRI RADIAL CUT FULL BATTEN "One Sails"  | € 9.000,00  | € 10.710,00 |
| MD006   | MAINSAIL DP HYDRA NET TRI RADIAL CUT 86 m2, Spectra "One Sails"   | € 18.000,00 | € 21.420,00 |
| MD007   | 105% GENOA DP HYDRA NET TRI RADIAL CUT, Spectra, UV protection "One Sails"                                    | € 12.500,00 | € 14.875,00 |
| MD008   | GENNAKER WITH SOCK 220 m2 "One Sails"   | € 6.800,00  | € 8.092,00  |
| MD009   | ALL DYNEMA HALYARDS   | € 5.900,00  | € 7.021,00  |
| MD010   | GENNAKER DECK EQUIPMENT- SHEETS, BLOCKS, PADEYES  | € 1.350,00  | € 1.606,50  |
| MD011   | CARBON/GRP BOW SPRIT FOR GENNAKER & CODE 0  | € 3.500,00  | € 4.165,00  |
| MD012   | INNER STAY WITH FURLER  | € 3.150,00  | € 3.748,50  |
| MD013   | REMOVABLE INNER STAY  | € 2.250,00  | € 2.677,50  |
| MD014   | BIG BIMINI TOP IN SUNBRELLA COVERING COCKPIT (possible to sail if main sheet is moved to mid boom)            | € 4.900,00  | € 5.831,00  |
| MD015   | SPRAYHOOD IN SUNBRELLA PLUS WITH STAINLESS STEEL TUBES  | € 3.900,00  | € 4.641,00  |
| MD016   | LAZY BAG & LAZY JACK (spectra ropes) IN SUNBRELLA PLUS  | € 2.050,00  | € 2.439,50  |
| MD017   | CARBON STEERING WHEEL 2 pcs   | € 3.400,00  | € 4.046,00  |
| MD018   | CARBON/GRP SEATS BEHIND THE STEERING WHEELS 2 pcs   | € 2.000,00  | € 2.380,00  |
| MD019   | LUXURY COUSHINS IN COCKPIT  | € 1.900,00  | € 2.261,00  |
| <b>PROPULSION &amp; ELECTRIC DECK EQUIPMENT</b> |   |             |             |
| MP001   | BOWTHRUSTER ELECTRIC RETRACTABLE 8 Kw   | € 11.800,00 | € 14.042,00 |
| MP002   | BOWTHRUSTER TUNEL 8 Kw  | € 7.500,00  | € 8.925,00  |
| MP003   | 3 BLADE FOLDING PROPELLER   | € 2.800,00  | € 3.332,00  |
| MP005   | EL. WINCH EVO 55 ST LEWMAR AVAILABLE ONLY WITH MI004)   | € 4.900,00  | € 5.831,00  |
| <b>EQUIPMENT</b>                                |   |             |             |
| ME001   | MOORING KIT (8 fenders, 4 mooring lines)  | € 1.100,00  | € 1.309,00  |
| ME002   | ANCHORING KIT<br>(anchor Delta 25 kg, chain 10mm/50m)   | STANDARD    | STANDARD    |
| ME003   | 10MM NATURAL TEAK ON COCKPIT BENCHES  | STANDARD    | STANDARD    |
| ME004   | 10MM NATURAL TEAK ON COCKPIT sole   | € 8.000,00  | € 9.520,00  |
| ME005   | 10MM NATURAL TEAK ON SIDE DECK  | € 19.000,00 | € 22.610,00 |
| ME006   | FLEXITEEK ON COCKPIT BENCHES, FLOOR AND SIDE DECK   | € 18.600,00 | € 22.134,00 |
| ME007   | HYDRAULIC BATHING PLATFORM IN TEAK  | € 2.600,00  | € 3.094,00  |
| ME008   | AIRCOMPRESSOR FOR TENDER  | € 780,00    | € 928,20    |
| ME009   | SUN BED CUSHIONS ON COACHROOF   | € 2.500,00  | € 2.975,00  |
| ME010   | SUN BED CUSHIONS FOR COCKPIT SEATS  | € 1.900,00  | € 2.261,00  |
| ME011   | FOLDING CLEATS (6pcs)   | € 2.400,00  | € 2.856,00  |
| ME012   | PROTECTIVE COVERS SET IN SUNBRELLA FOR STEERING WHEELS  | € 1.200,00  | € 1.428,00  |
| ME013   | OUTBOARD ENGINE BRACKET   | € 154,00    | € 183,26    |
| <b>INTERIOR</b>                                 |   |             |             |

| MORE 55 PRICE LIST 2020 - 2021 |   | Price       |             |
|--------------------------------|---|-------------|-------------|
| Code                           | Price list validity: March, 2020. This price list automatically cancels all previously distributed. (E.&O.E.) | net.        | inkl. 19%   |
| MI001                          | ALUMINIUM FLOORS WITH LAMINATE TOP  | STANDARD    | STANDARD    |
| MI002                          | ALUMINIUM FLOORS WITH LUXURY VINYL TOP  | € 1.500,00  | € 1.785,00  |
| MI003                          | BATTERY BUNK 600 Ah   | STANDARD    | STANDARD    |
| MI004                          | BATTERY BUNK UPGRADED BY 300 Ah   | € 750,00    | € 892,50    |
| MI005                          | GEL UPGRADED BATTERIES (PER PCS)  | € 200,00    | € 238,00    |
| MI006                          | MASTERVOLT BATTERY CHARGER  | € 3.000,00  | € 3.570,00  |
| MI007                          | FISCHER PANDA GENERATOR 8000i 6kW   | € 15.000,00 | € 17.850,00 |
| MI008                          | CUMMINS ONAN GENERATOR 8000 6kW   | € 15.000,00 | € 17.850,00 |
| MI009                          | INVERTER/CHARGER 12/2500-100 ac   | € 4.200,00  | € 4.998,00  |
| MI010                          | AIR CONDITIONING 2 x 13000 BTU (only with generator)  | € 12.000,00 | € 14.280,00 |
| MI011                          | DIESEL FORCED HEATING (not compatible with A/C)   | € 6.000,00  | € 7.140,00  |
| MI012                          | WATERMAKER SCHENKER 12V-60L/H   | € 10.500,00 | € 12.495,00 |
| MI013                          | WATERMAKER SCHENKER 12V-100L/H  | € 12.100,00 | € 14.399,00 |
| MI014                          | FREEZER   | € 1.900,00  | € 2.261,00  |
| MI015                          | ADDITIONAL FRIDGE IN KITCHEN  | € 1.350,00  | € 1.606,50  |
| MI016                          | MICROWAVE   | € 750,00    | € 892,50    |
| MI017                          | DOUBLE BERTH IN SALOON WITH DELUXE ELECTRIC TABLE   | € 2.000,00  | € 2.380,00  |
| MI018                          | ADDITIONAL HOLDING TANK   | € 450,00    | € 535,50    |
| MI019                          | ELECTRIC TOILETTE (holding tank included)   | € 750,00    | € 892,50    |
| MI020                          | TV ANTENNA  | € 300,00    | € 357,00    |
| MI021                          | LED TV 19" + CD/DVD/MP3 PLAYER + SPEAKERS   | € 1.900,00  | € 2.261,00  |
| MI022                          | Dishwashing machine   | € 1.700,00  | € 2.023,00  |
| MI023                          | Laundry machine   | € 1.500,00  | € 1.785,00  |
| MI024                          | LED TV 22" in Saloon * TV Antenna not included  | € 1.600,00  | € 1.904,00  |

Delivery terms: EXW Dugopolje, HR (Incoterms 2000). Launching and commissioning operations will take place after delivery EXW Dugopolje